

Fig. 2

86°40'0"E

87°0'0"E

86°40'0"E

87°0'0"E

24°0'0"N

24°0'0"N

WEST BENGAL

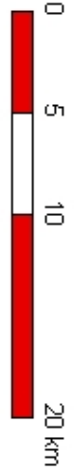
Girdih Dist.

Dhanbad Dist.

Deoghar Dist.

Dumka Dist.

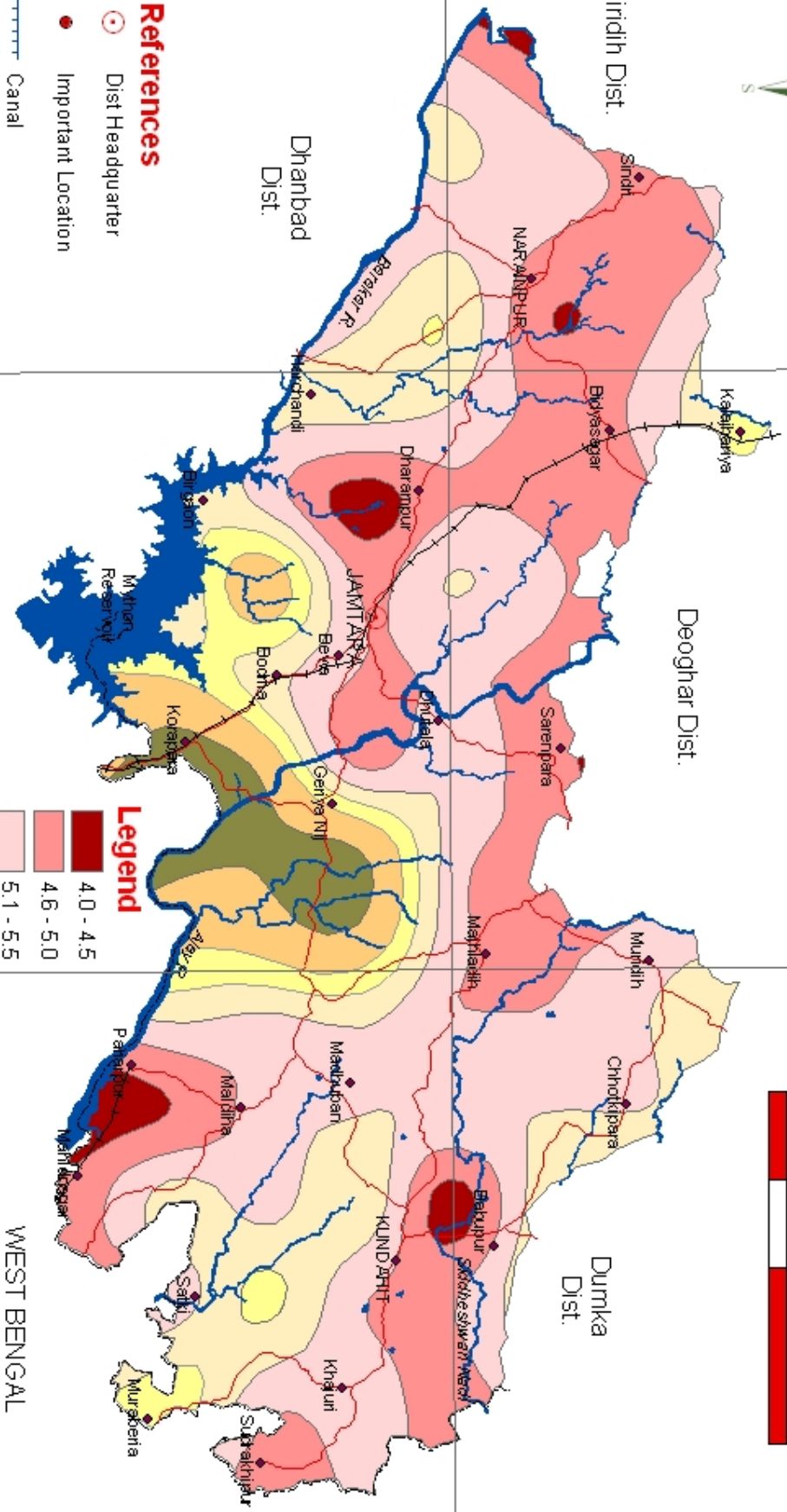
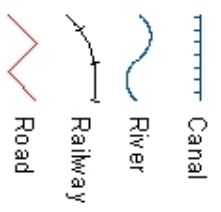
SOIL REACTION (pH)
JAMTARA DISTRICT
JHARKHAND



Legend



References

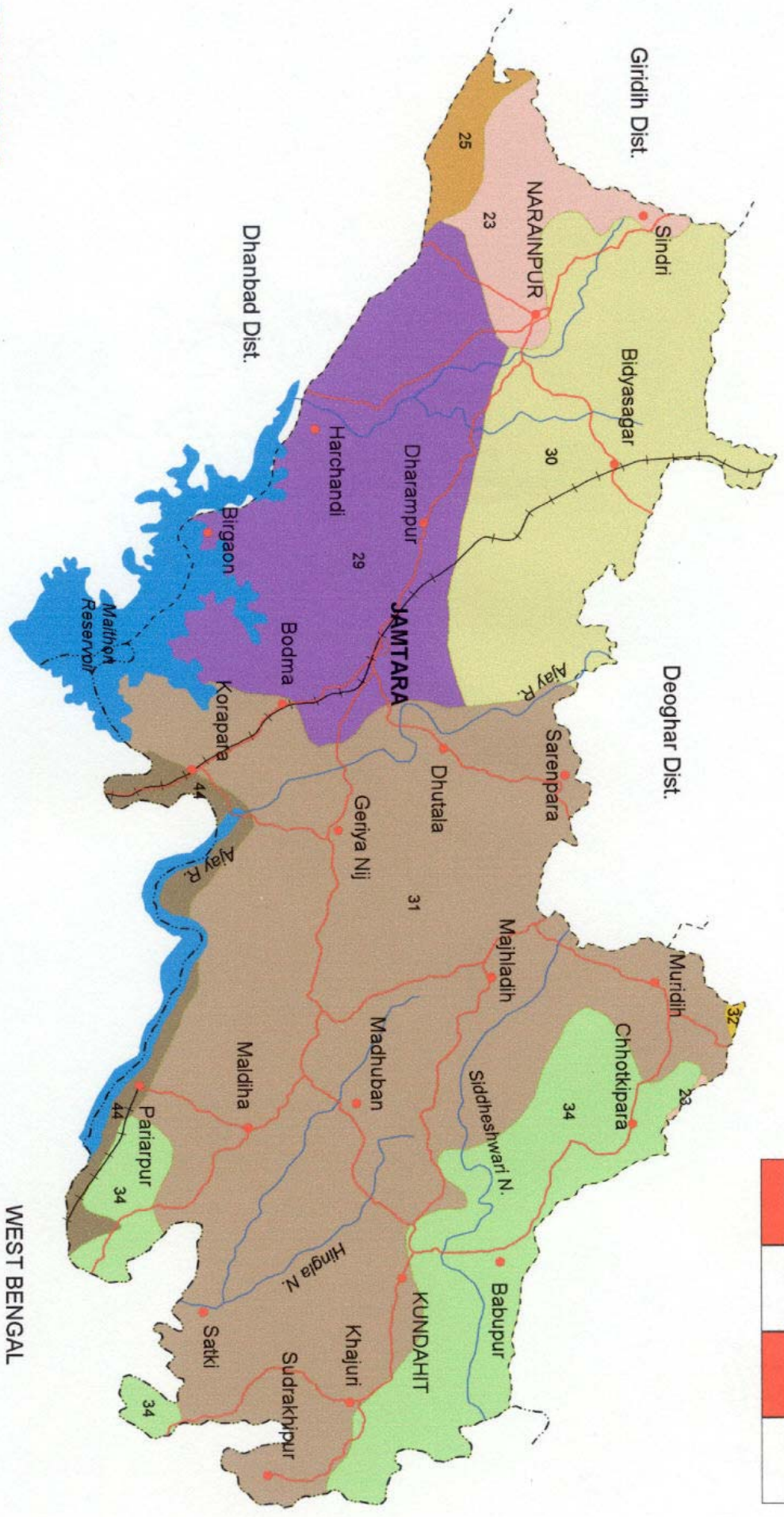
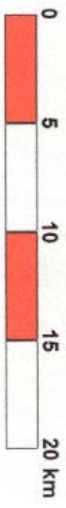




SOILS

JAMTARA DISTRICT

JHARKHAND



LEGEND

23	31
25	32
29	34
30	44

- REFERENCES**
- ◉ Dist Headquarter
 - Important Location
 - Railway
 - Road
 - River

Fig. - 1

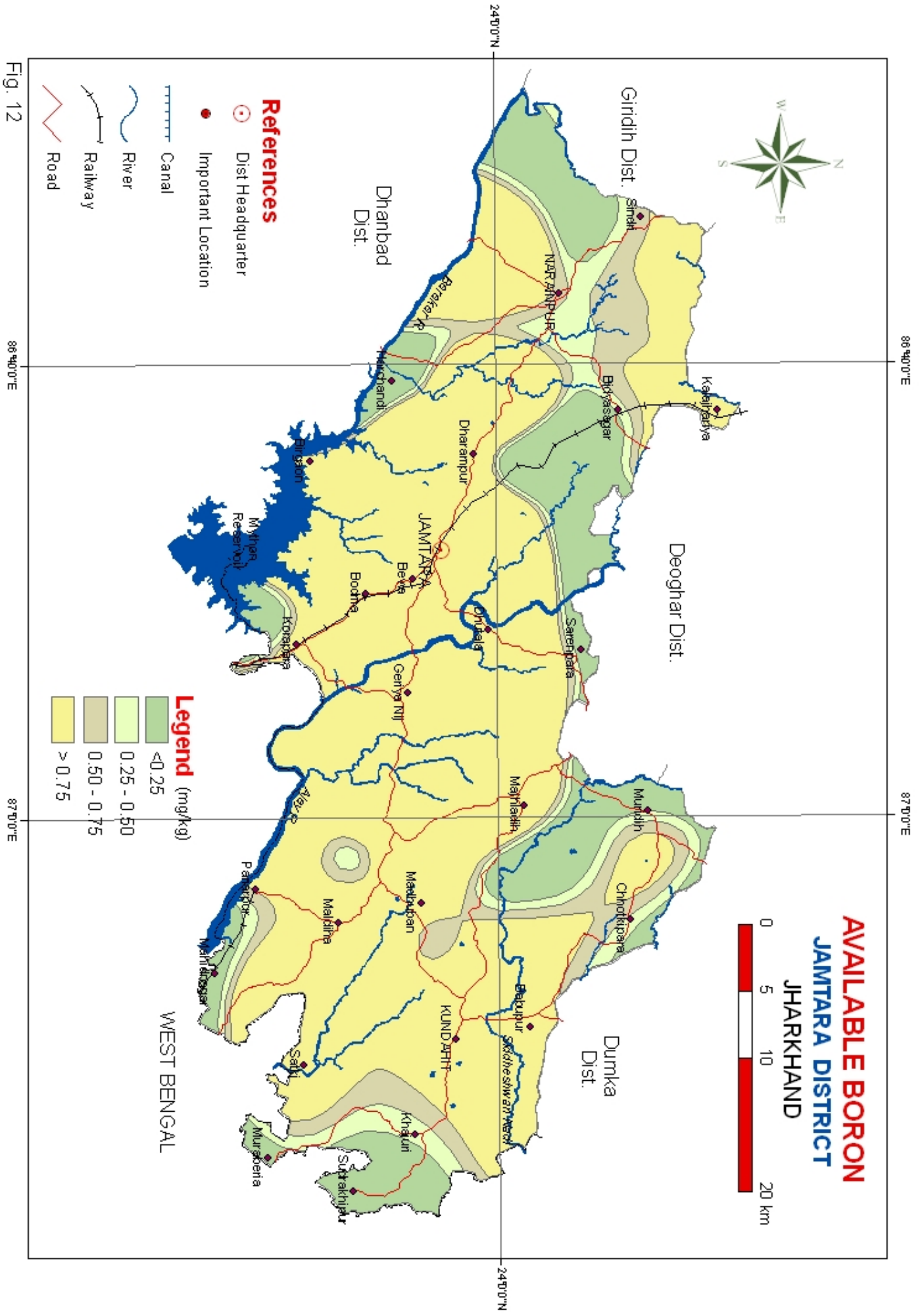


Fig. 12

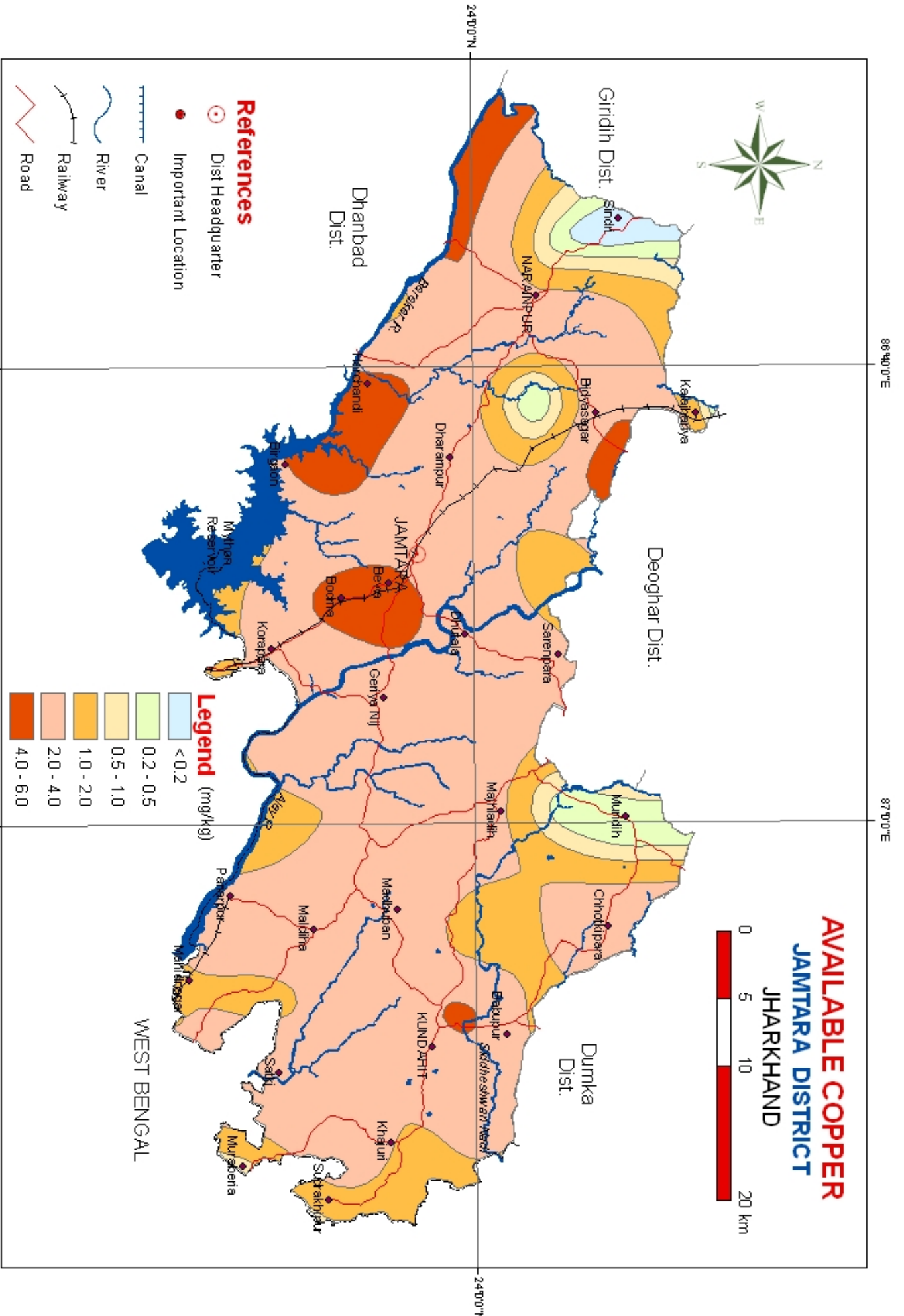


Fig. 11

88°40'E

87°0'E

88°40'E

87°0'E

24°0'N

24°0'N

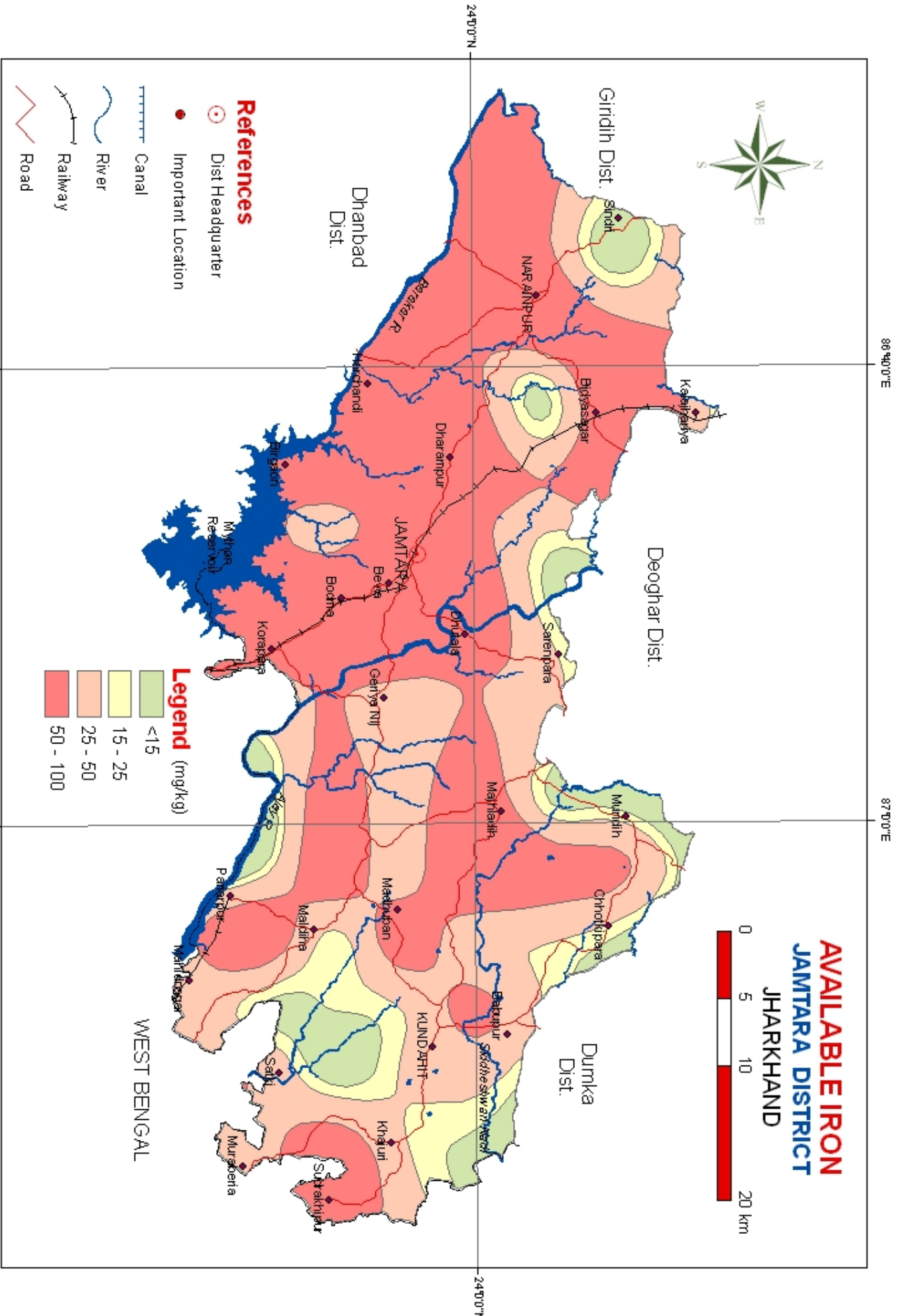


Fig. 8

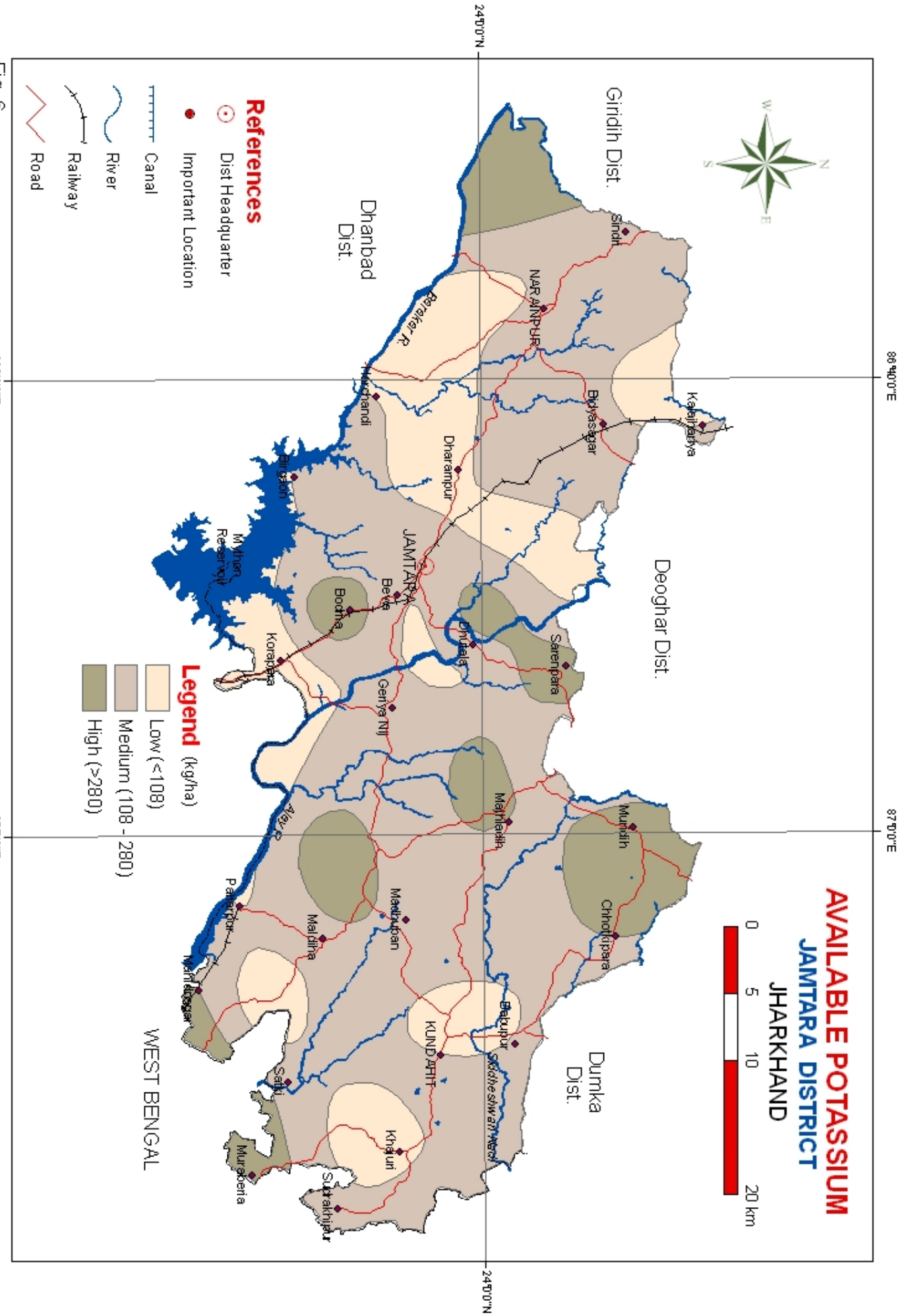


Fig. 6

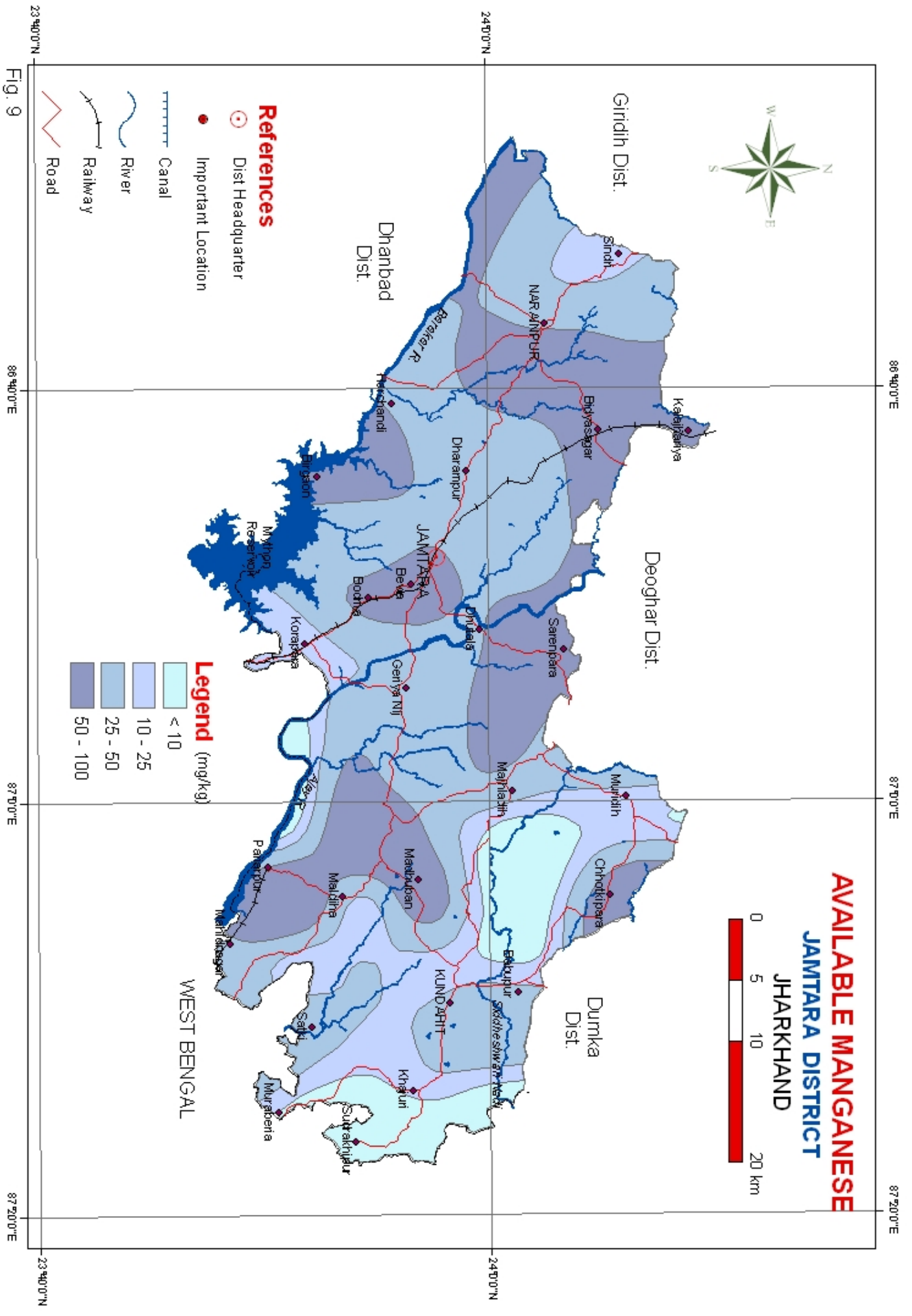


Fig. 9

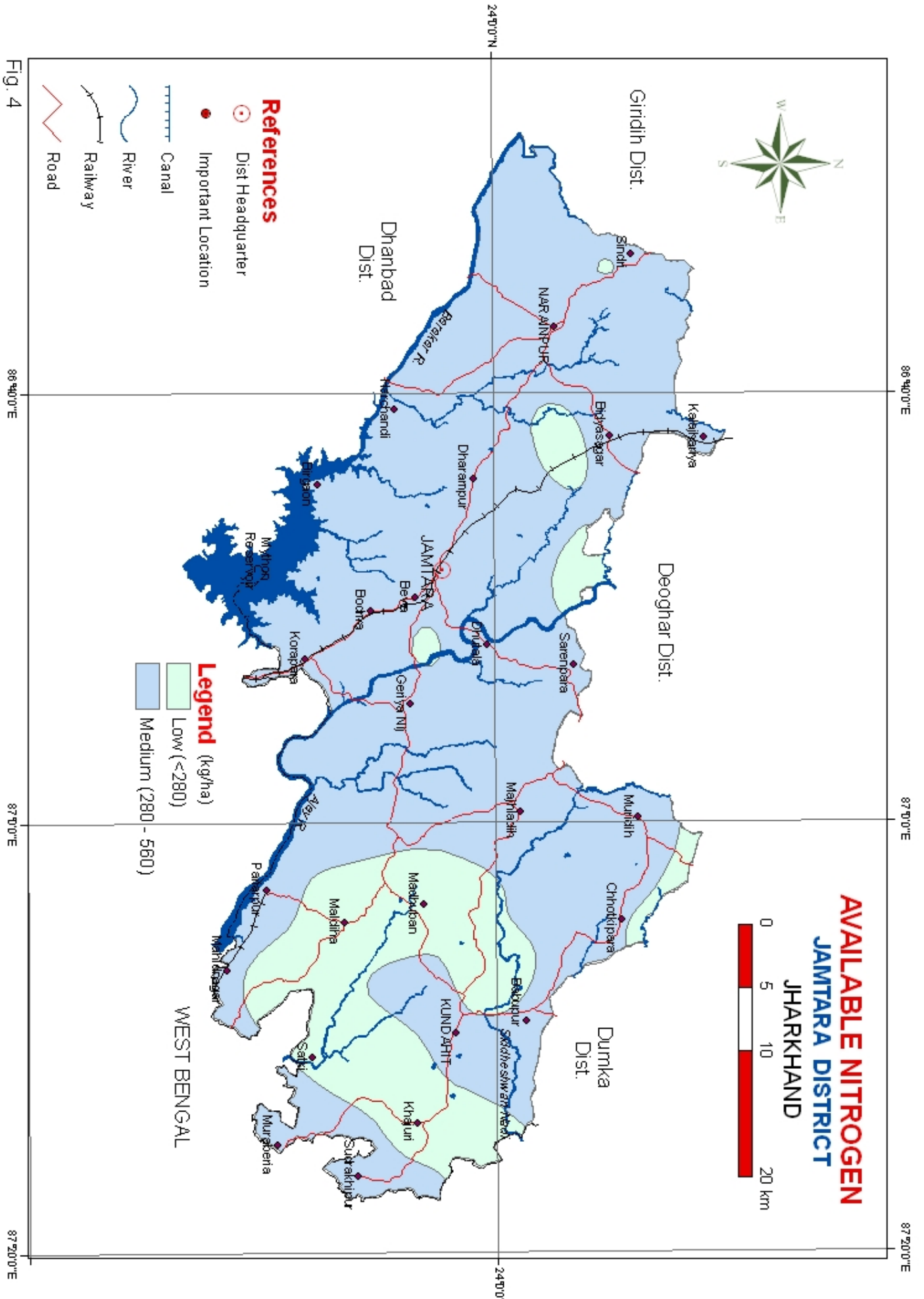


Fig. 4

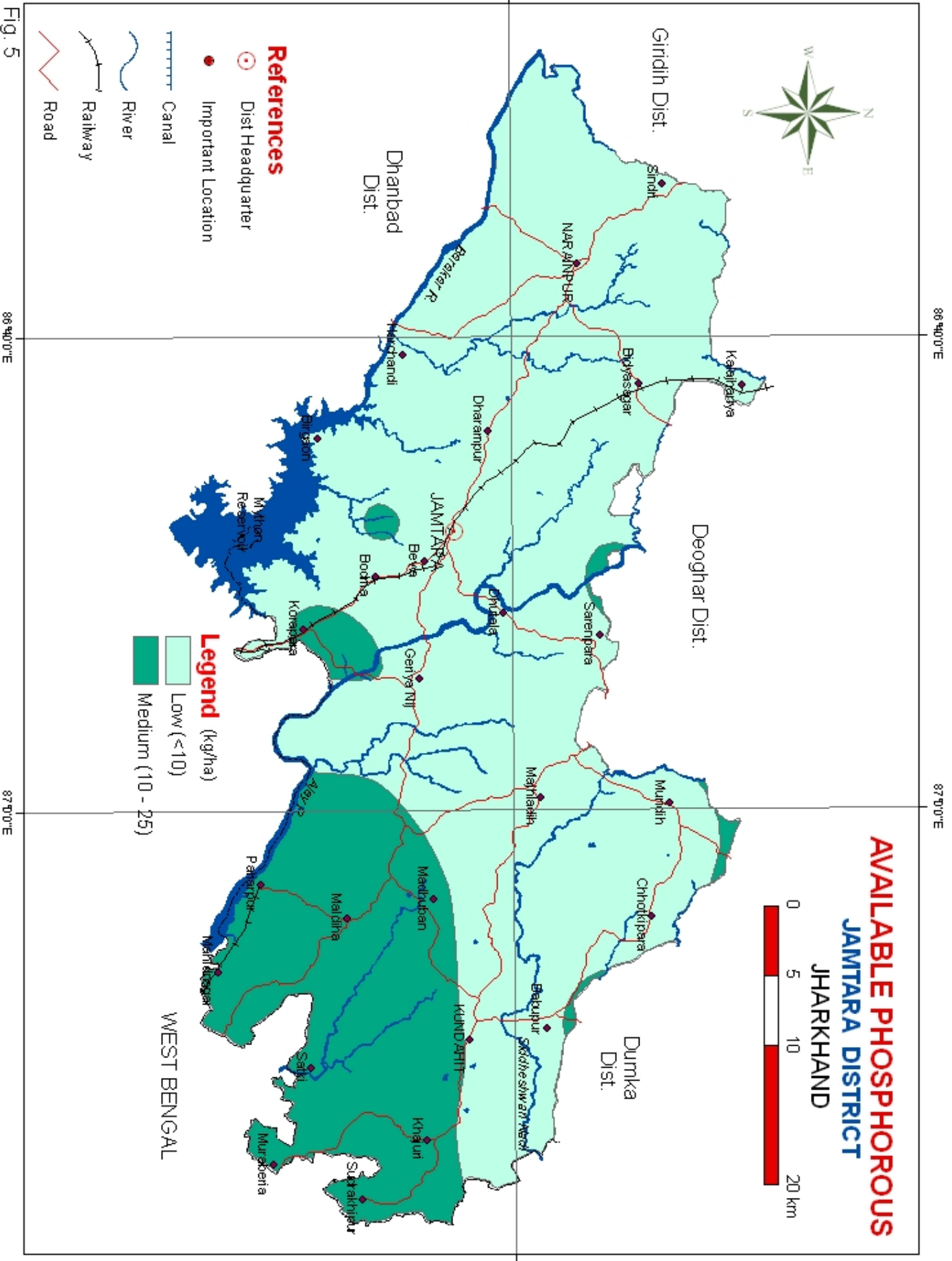


Fig. 5

86°40'E

87°0'E

86°40'E

87°0'E

24°0'N

24°0'N

Giridih Dist.

Dhanbad Dist.

Deoghar Dist.

Dumka Dist.

KUNDAPPA

WEST BENGAL

JAMTARA

Mythun Reservoir

Korekha

Pararok

Murberia

Siroh

NARAINPUR

Bidyasagar

Dharmpur

Beraha

Gehya III

Muridih

Chhotkipara

Belurpur

Khajuri

Sattakhur

Berahmukh R.

Chitauli

Mathlaaha

Belurpur

Khajuri

Sattakhur

Ambarpur

Korekha

Pararok

Murberia

Sattakhur

Murberia

Sattakhur

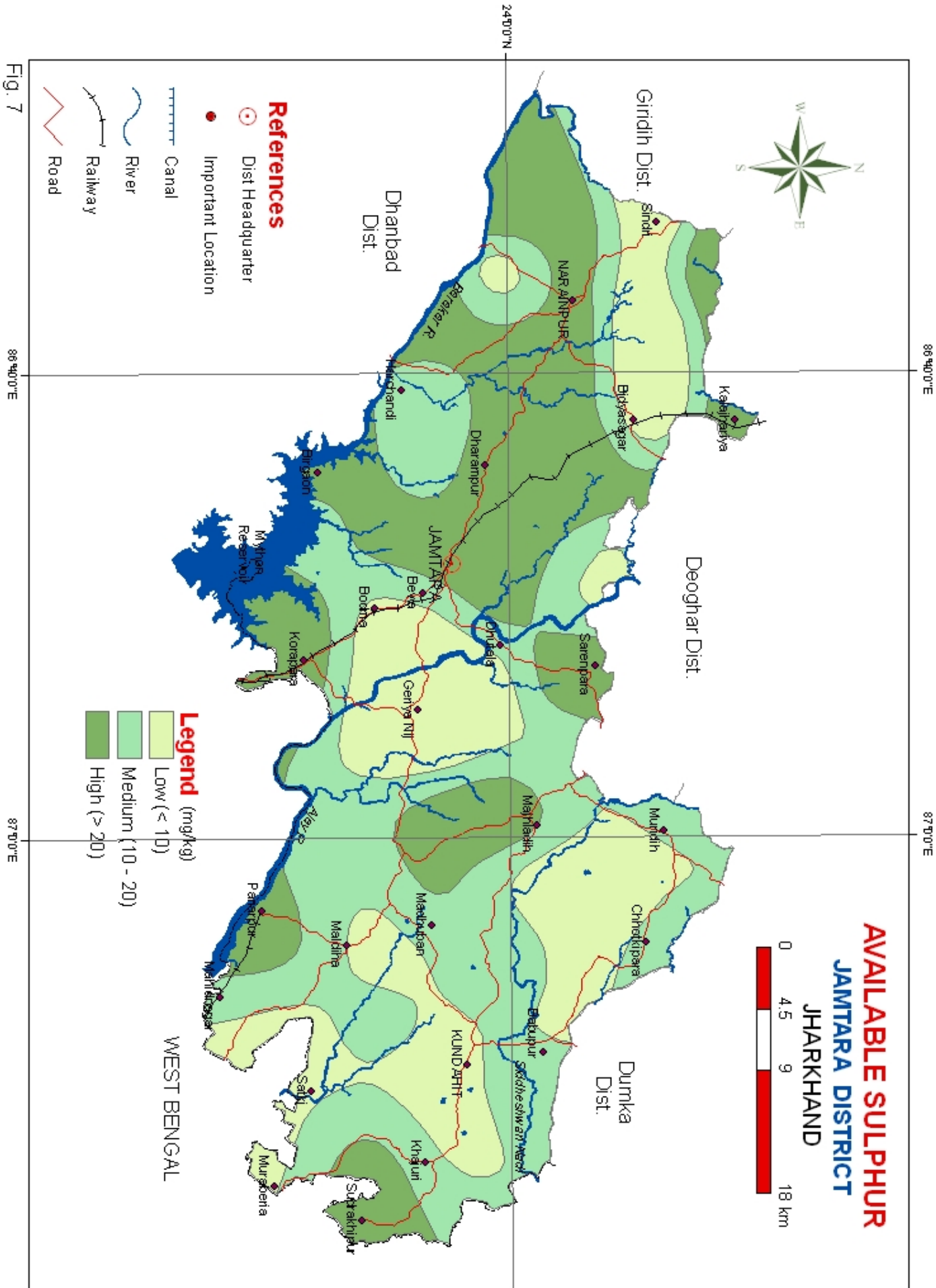


Fig. 7

88°40'E

87°50'E

88°40'E

87°50'E

24°0'N

24°0'N

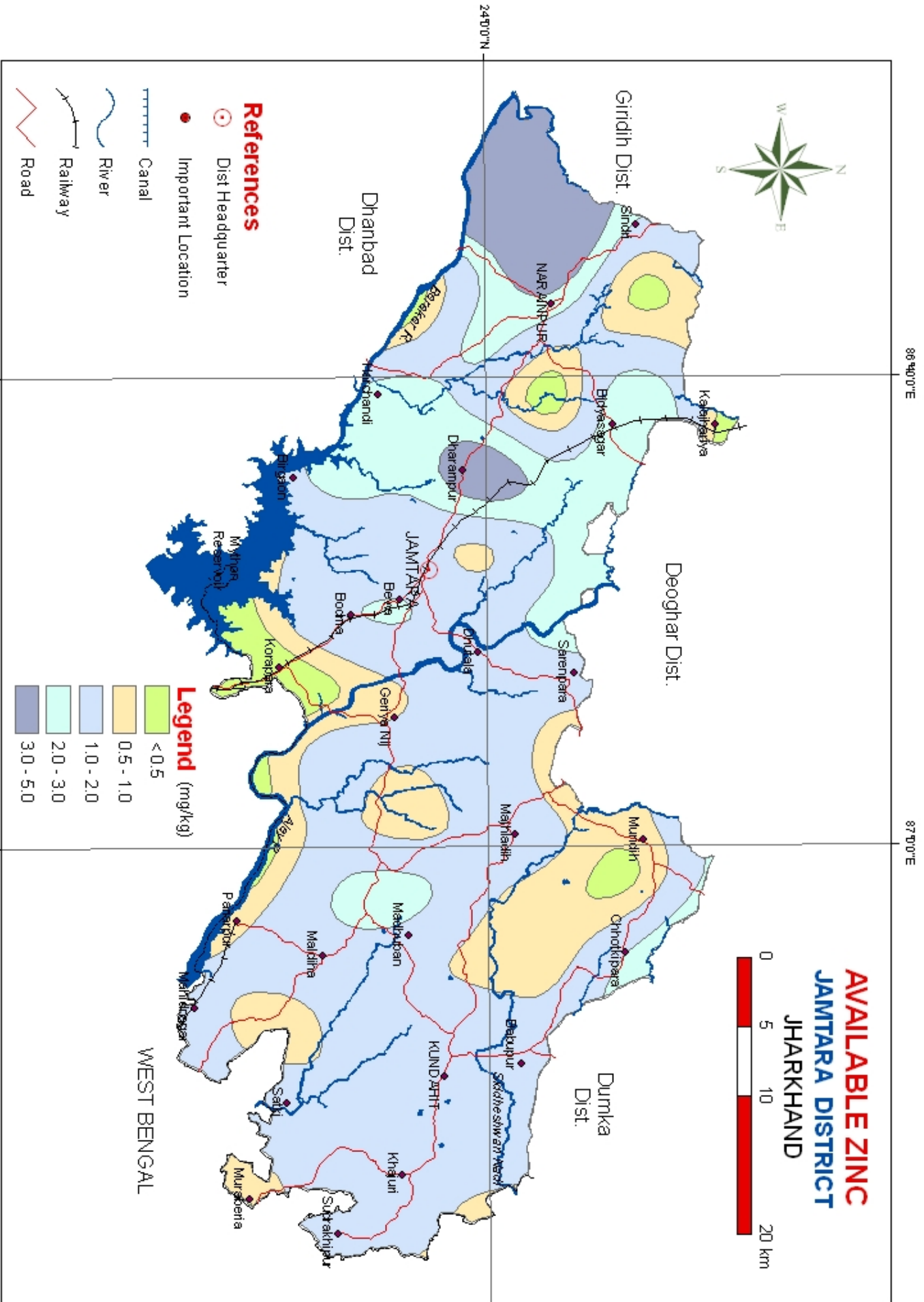


Fig. 10

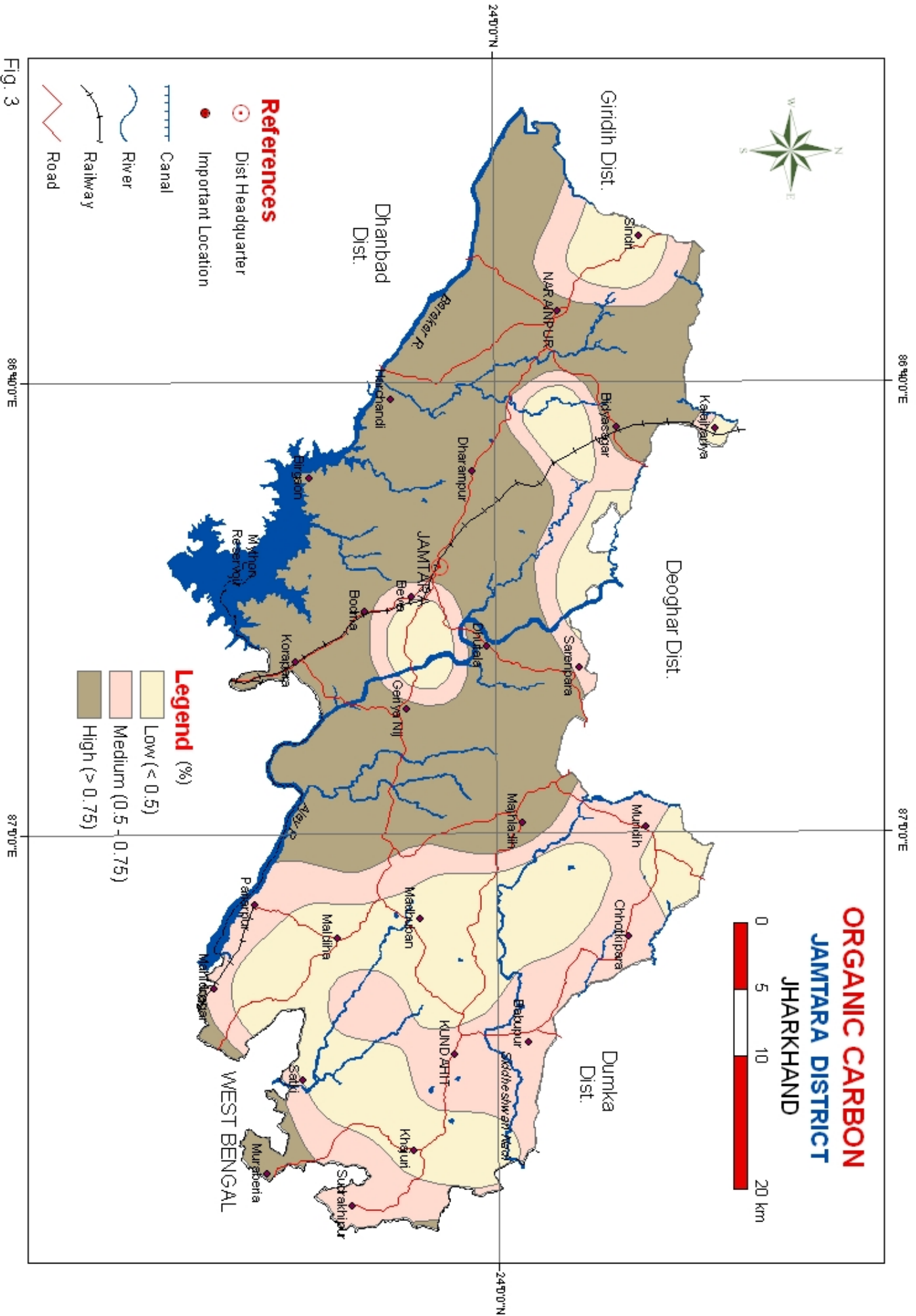


Fig. 3